

中德融创工场 年报 2020

Inclusion Factory
Annual Report 2020

推动心智障碍人士的融合就业

Inclusive Employment for People with Intellectual Disabilities

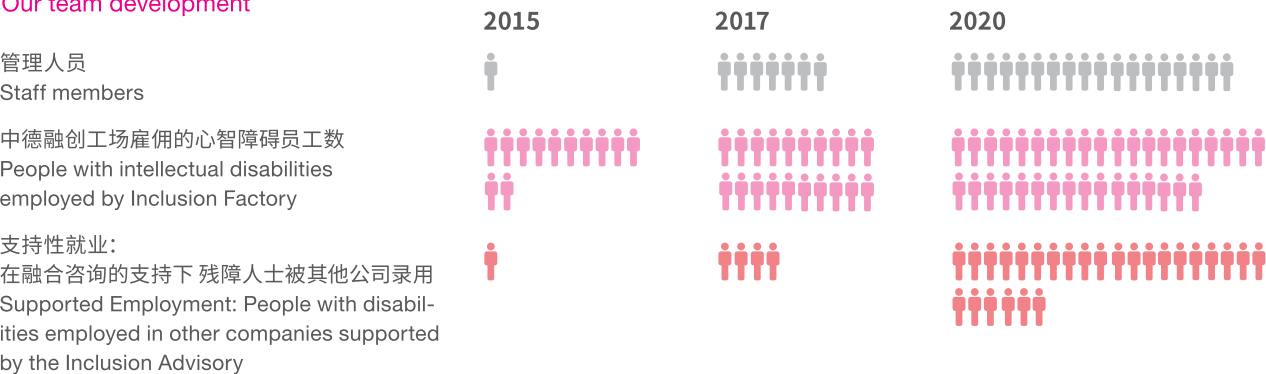


社会影响

Social Impact

我们团队的成长

Our team development



融合模式的复制

Duplicating our model



影响他人

Influencing people



就业辅导员认证

Certified job coaches

17位社工经过就业辅导员学院培训后获得由德国工商总会颁发的就业辅导员资格证。
17 social workers, trained in our Social Inclusion Academy (SIA), certified by AHK German Chamber of Commerce, graduated with a Inclusive Job Coach certificate.



残障平等意识

Disability Equality Awareness

12家企业累计195人参加了工作坊，帮助残障人士融入职场，从改变对残障人士的观念和态度开始。
A total of 195 people from 12 enterprises participated in the workshop to help change the mindset and attitudes towards people with disabilities as an initial step for inclusive employment.



就业衔接项目

Transition program

7名特殊毕业生，在由慕贝尔赞助的就业衔接项目中得到培训
Taicang Special Education graduates have been trained in Inclusion Factory Transition Program sponsored by Mubea

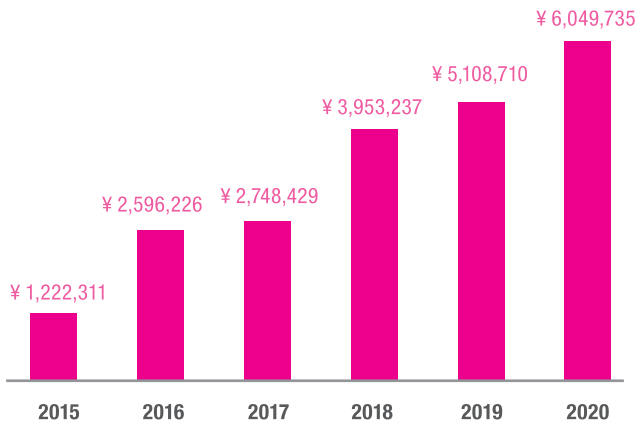
运营成果

Operational Success

2020年产量
2020 Production volume



收入增长
Growth in income



我们的客户满意度
Our customer satisfaction rate

我们在2020年6月对14家生产客户做的满意度调查得出的结果
As measured in our yearly customer satisfaction survey conducted on June 2020 among our 14 production customers



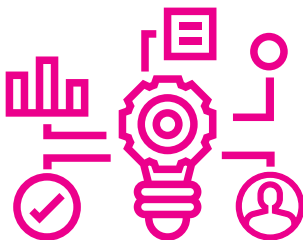
SAP智能排班系统
SAP intelligent shift management system

SAP团队为我们量身订造了一个智能排班系统，根据订单的交付时间，结合每一位员工的特长，智能调整生产安排，优化产能，准时交付给客户。
Our intelligent shift management system was tailored for our operation by SAP. The system takes into consideration the delivery time of the order, combined with the capabilities of each employee; the system arranges operators' daily shifts, optimizes production capacity, and allows us to deliver to the customer on time.

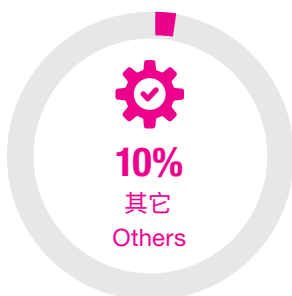
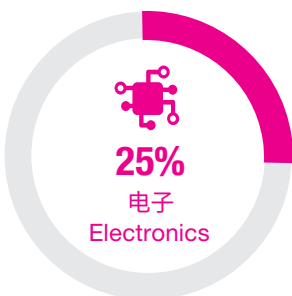
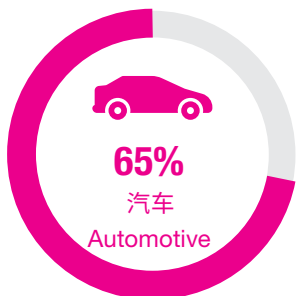


企业资源计划系统
Enterprise Resource Planning Software

我们启动了一个完整的企业资源计划系统（ERP），用于我们的业务流程的综合管理。
We launched a comprehensive ERP (Enterprise Resource Planning) software - for the integrated management of our our business processes.



我们2020年的销售结构
Our sales composition in 2020



2020年中德融创工场企业社会责任奖 获奖名单

Inclusion Factory's Corporate Social Responsibility Awardees 2020



国际影响

International Impact



联合国可持续发展目标

SDG - Sustainable Development Goals

我们响应联合国的号召，推动2030年变革世界的可持续发展目标。中德融创工场致力于推动无贫穷、优质教育、体面工作和经济增长、减少不平等、负责任消费和生产。

In response to the call of the United Nations and in order to promote the sustainable development goals that will transform the world by 2030. Inclusion Factory is committed to Poverty Elevation, Quality Education, Decent work & Economic Growth and Reducing Inequalities, Responsible Consumption and Production.



International
Labour
Organization

GLOBAL BUSINESS
AND DISABILITY
NETWORK

国际劳工组织全球商业与残障网络

- 中国分支创始成员

GBDN Global Business and Disability
Network - China founding member

中德融创工场是国际劳工组织全球商业与残障网络的创始成员之一，这是一个全球性的、由企业主导的组织，致力于推动残障人士融入职场。

The Inclusion Factory is a founding member of the ILO Global Business and Disability Network; a unique employer-led initiative that works to promote the inclusion of people with disabilities in workplaces around the world.

合作伙伴 2020

Our Partners in 2020

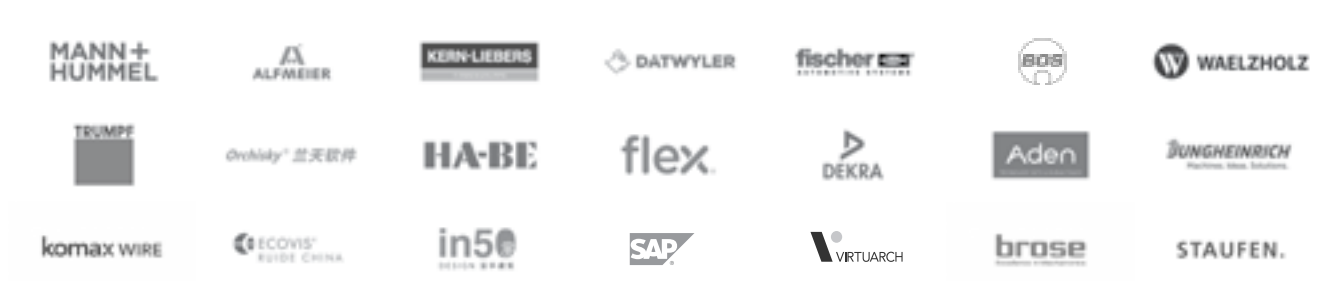
项目合作伙伴 Project Partners



白金合作伙伴 Platinum Partners



黄金合作伙伴 Gold Partners



珍珠合作伙伴 Pearl Partners



**太仓中德善美实业有限公司**

中国江苏省苏州市太仓经济开发区北京东路88号
中科软件园, 邮编: 215400

Inclusion Factory

China Science & IT Park, 88 Beijing East Road,
Taicang Economy Development Area, Suzhou City,
Jiangsu Province, 215400 P.R. China



***Inclusive Employment for People
with intellectual Disabilities***
**推动心智障碍人士
融合就业**

www.inclusion-factory.com
info@inclusion-factory.com
T: +86 (0) 512 5386 3602